



Hose Reels

HANNAY REELS



For use for:

- Air/Water
- Washdown
- Refueling
- Lubrication
- Hydraulics
- Grounds Maintenance
- Pest Control
- Repair and Maintenance
- Fire Protection
- Construction/Mining
- Marine/Offshore

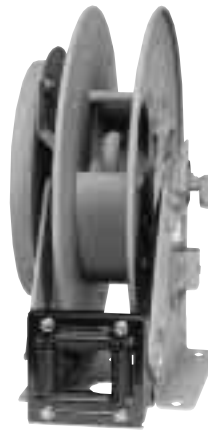
H-9419-H
Rev. 7

Hannay hose reels come in all sizes and capacities.

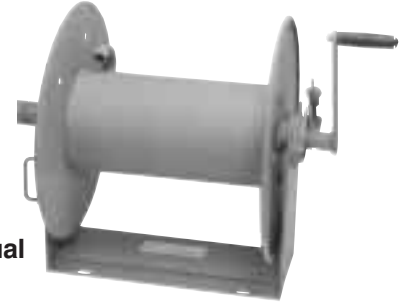
Hannay Reels is the leading manufacturer of high quality hose and cable reels for most every conceivable application. This catalog describes and gives specifications on our most popular hose reels. If you don't find what you're looking for, give us a call and we will help you meet your needs.

Reel Selector Chart

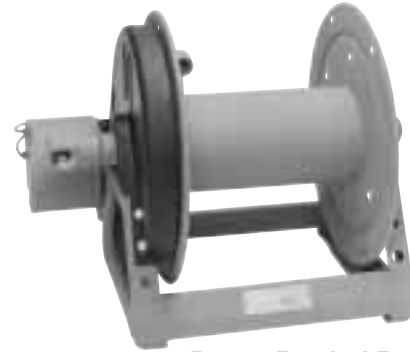
Reel Type	I.D. Hose Sizes	Page
Hose Assemblies	1/4"-1 1/2"	3
Hannay Reels Policies		
Our Guarantee, Service Policy, Paint Notice, Return Goods Policy		4
Spring Rewind Reels		
Series N500 (high pressure)	1/4"- 3/8"	5
Series N600/600 (dual hose)	1/4"- 3/4" Dual	6-7
Series N700/700	3/8" & 1/2"	8
Series N800/800	3/4" & 1"	9
Series 900	1 1/4" & 1 1/2"	10
Compact Manual Rewind Reels		
Series 1000	1/4"- 3/8"	11
Power Rewind Reels		
Series 1500, 1800, 4000	1/4"- 1"	12-13
Series 2000, 7000 (dual hose)	1/4"-1" Dual	14-15
Series 6000	1/2"-1"	16-17
Series 7500	1"-1 1/2"	20-21
Series 8000	1 1/2"- 2"	22-23
Series 9000	2"- 3"	24-25
Manual Rewind Reels		
Series 3000, 3500	3/4"-1 1/2"	18-19
Storage Reels		
Series C3200, C1500	1/4"-1 1/2"	26-27



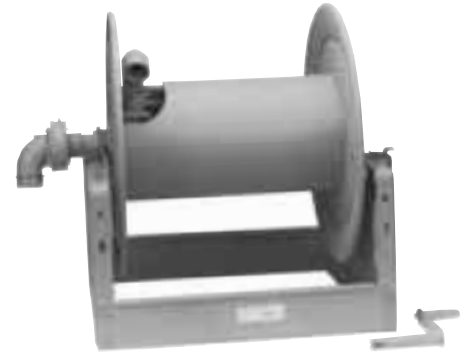
Spring Rewind Reels



Compact Manual Rewind Reels

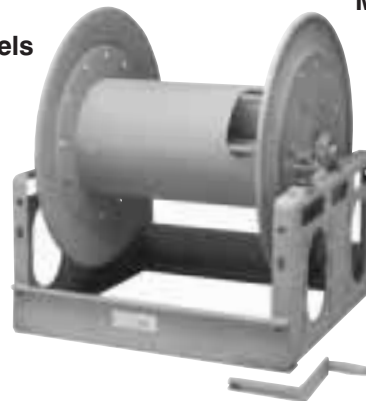


Power Rewind Reels



Manual Rewind Reels

Storage Reels



Standard Configuration Shown

Note - Mounting Hole Sizes:

N Series Reels

7/16" x 7/8" running front to back

Pressed Frame Reels

7/16" x 7/8" running left to right

Series 1500, 1800, 4000, 2000

7/16" round holes

Hose Assemblies

Hannay offers a wide selection of low, medium, and high pressure hose assemblies for a variety of applications such as general purpose air and water, petroleum products, hydraulics, oxygen/acetylene, breathing air, potable water, steam, and pressure washing. These assemblies are available with inside diameters ranging from 3/16" to 3",

working pressures from 100 psi to 10,000 psi (7 bar to 689 bar), working temperatures from -65° F to +450° F (-54° C to +232° C), and in most cases at least a 4:1 burst pressure ratio. Hannay also offers 24" flexible connectors for most reels. Please contact our factory with your specific need.

Low Pressure Hose

Our low pressure hose assemblies with inside diameters of 1/4", 3/8", 1/2", and 3/4" have working pressures from 300 psi to 350 psi (21 bar to 24 bar), working temperatures from -40° F to +212° F (-40° C to +100° C) depending on fluid, and have a synthetic rubber core and cover with a one textile braid reinforcement. They are designed for use with petroleum-based hydraulic fluids and lubricating oils, water, water/glycol, water/oil emulsion hydraulic fluids, and air.

Our low pressure hose assemblies with inside

diameters of 1", 1-1/4", and 1-1/2" have working pressures of 200 psi (14 bar), working temperatures from -40° F to +180° F (-40° C to +82° C). They have a blended nitrile core, a neoprene cover, and four spiral reinforcements for the 1" and an EPDM core and cover with a two textile braid reinforcement for the 1-1/4" and 1-1/2" (also available in 1"). The nitrile/neoprene hose is designed for transfer of air and water. The EPDM hose covers these applications, plus it is good for conveying water-based liquid fertilizers, pesticides and other products.

Medium Pressure Hose

Our medium pressure hose assemblies with inside diameters of 1/4", 3/8", and 1/2" have working pressures from 2000 psi to 2750 psi (138 bar to 190 bar), working temperatures from -40° F to +250° F (-40° C to +121° C), and have a synthetic rubber core and cover with one

braid of high tensile steel wire for reinforcement. They are designed for use with petroleum-based hydraulic fluids and lubricating oils, water, water/glycol, water/oil emulsion hydraulic fluids, and air.

High Pressure Hose

Our high pressure hose assemblies with inside diameters of 1/4", 3/8", and 1/2" have working pressures from 3500 psi to 5000 psi (241 bar to 345 bar), working temperatures from -40° F to +257° F (-40° C to +125° C), depending on fluid, and have a synthetic rubber core and

cover with two braids of high tensile steel wire separated by a synthetic layer for reinforcement. They are designed for use with petroleum-based hydraulic fluids and lubricating oils, water, water/glycol, water/oil emulsion hydraulic fluids, and air.

Twin Oxygen/Acetylene Hose

Our oxygen/acetylene grade R hose assemblies with inside diameters of 1/4" and 3/8" have working pressures of 200 psi (14 bar), working temperatures of -40° F to +200° F (-40° C to +93° C), and have an EPDM core

and cover with one textile braid reinforcement. This hose is designed for oxygen/acetylene only. Grade T oxygen/acetylene, propane, MAPP gas hose is also available. For oxygen/acetylene reels see Hannay Welding Catalog-H-9422-W.

Twin Hydraulic Hose

Our twin hydraulic hose assemblies with inside diameters of 1/4", 3/8", and 1/2" have working pressures from 2000 psi to 5000 psi (138 bar to 345 bar), working temperatures from -40° F to +212° F (-40° C to +100° C), and have a polymeric core, abrasion-resistant urethane

cover, and braided fiber reinforcement. This hose is not only designed for hydraulic and pneumatic circuits, but has a wide chemical compatibility that covers applications such as agricultural sprays, urethane foam mixers, and fire resistant fluids.

Note: All spring rewind reels complete with hose are supplied with appropriate hose stop. (See Ordering Guide & Accessory Catalog.)

Our Guarantee

Equipment **manufactured** by Hannay Reels, Inc. is guaranteed for one year from date of shipment when installed according to our instructions, given proper care, and used for the purpose for which it is designed.

Equipment which proves to be defective upon our inspection will be replaced free of charge, F.O.B., Westerlo, New York. No allowance will be made for labor charges incurred in making exchanges, replacements or repairs.

Components (including hose and cable) which are manufactured by other vendors, will be subject to the warranty terms of their own manufacturers.

We expressly disclaim any liability for damage or injuries resulting from the use, operation, service, maintenance or failure of equipment.

Service Policy

Equipment manufactured by Hannay Reels is warranted for a period of one year from date of shipment to the extent that we will repair or replace such equipment, F.O.B., Westerlo, N.Y., if it is defective, by reason of faulty material or workmanship, under normal use and service for the purpose for which it was designed. Our responsibility ceases upon delivery to any common carrier and we do not, unless previously instructed, insure shipments beyond point of delivery to such carrier.

We reserve the right to modify or alter materials, dimensions, design and construction, when necessary to improve the performance of the reel and/or accessories, or to meet delivery requirements.

Failure to use circuit breakers with any electric rewind motor will void warranty on motor.

Failure to use flexible connector with any live hose reel will void warranty on swivel joint.

Paint Notice

To meet the requirements and performance of vehicle and OEM apparatus paints we recommend our reels be painted with the same or equal paint as used on the specific apparatus the reel is being mounted on.

Hannay Reels will supply any model or custom reel or part with an automotive primer or rust preventative oil finish upon request, allowing application of final coating at your facility. Or at additional cost Hannay can prime / pre-paint all material before final assembly.

In today's regulatory environment this would be the most cost-effective way to meet your finishing standards.

Consult factory for other optional finishes.

Standard finish is oven cured enamel. High performance finishes for demanding and corrosive environments are available at an additional cost. Consult factory for specific requirements.

Return Goods Policy

All Hannay Reels are built to order. The parts and components are ordered or placed into production as soon as the order is written.

In order to keep the number of returned goods at a minimum, we ask that you use the Hannay Reels Order Worksheet and/or Accessories Order Form when specifying reels with us. These forms can be found in our Ordering Guide and Accessory Catalog, H-9412-OA. **Be sure to include any size and/or weight limitations for your installation.**

In the event that an item does need to be returned for credit, repair or replacement, prior approval **must** be obtained from Hannay Reels, Inc. Upon your request, we will fax a Return Goods Authorization form. A signed copy of this form **must** accompany the material when returned to us.

All material must be returned prepaid, unless otherwise noted on our Return Goods Authorization. No return will be accepted that has been damaged due to improper return packaging, tampered with or altered from its original condition. **Equipment specially built to customer specifications and requirements is not subject to cancellation nor returnable for credit under any conditions.**

Our restocking and handling fee is a **MINIMUM** of 25% for standard catalog reels and parts.

No material will be accepted for credit when returned without permission. No material will be accepted for credit after one year from date of purchase. Orders for equipment incorporating variations from catalog listed items are special and are not subject to return.

No allowance will be made for labor or mileage charges incurred in making exchanges, replacements, or repairs.

High Pressure Spring Rewind Reels To handle single 1/4" or 3/8" I.D. hose.

Series N500 reels offer a compact frame and narrow base for ease of installation plus the advantages of spring rewind for efficient hose handling.

Rewind:

A heavy-duty spring motor provides self-contained rewind power. A non sparking ratchet assembly locks the reel when the desired length of hose has been payed out. A pull on the hose unlocks the reel and the spring motor retracts the hose. A declutching arbor is provided to prevent damage from reverse winding.

Inlet:

Standard inlet is 90° swivel joint with 1/4" female NPT threads. 3/8" female NPT threads are optional **and must be specified on order.**

Outlet:

Standard outlet is 1/4" female NPT threads. 3/8" female NPT threads are optional **and must be specified on order.**

Other threads can be furnished and must be specified.

Operating Pressures & Temperatures:

These 1/4" reels operate at standard pressure of 10,000 psi (689 bar) and handle product temperatures from -20° F to +225° F (-29° C to +107° C). Optional 1/4" 3000 psi (207 bar), or 3/8" 3000 psi (207 bar) or 8000 psi (552 bar) reels are available upon request.

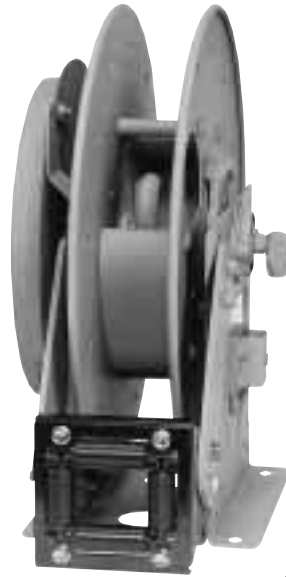
Rollers:

All models are supplied with a 4-way roller assembly. Roller position must be specified. (See Ordering Guide & Accessory Catalog.)

Hose Stop:

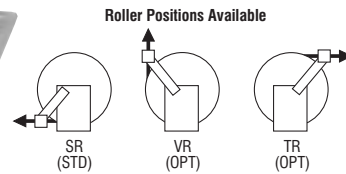
A hose stop should be used to prevent damage to rollers and nozzles and to permit adjustment of free hose length. (See Ordering Guide & Accessory Catalog.)

Finish: Refer to page 4.



For:

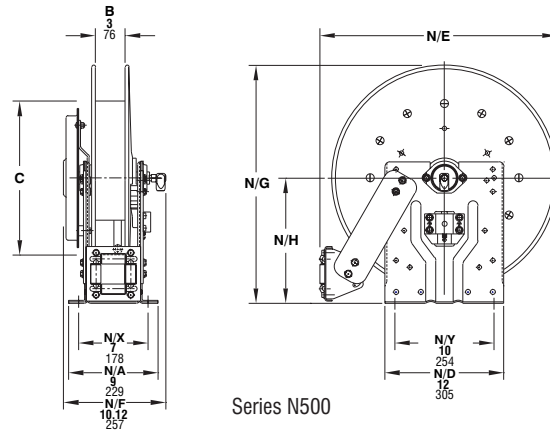
- Chassis Grease
- Hydraulics
- Air/Water



Series N500

Standard Configuration Shown

Dimensions and capacities



Series N500

BE SURE TO CHECK DIMENSIONS AND WEIGHTS PRIOR TO ORDERING.

To receive a detailed parts breakdown drawing for Series N500, request ISO 92.

Hose Capacity of Reel feet m.	Model Number	Reel Dimensions inches mm.				Approx. Weight lb. kg.		Roller Assy Supplied on Standard Models
		C	N/E	N/G	N/H	* NET	Fr. SHIP Wt.	
I.D. (in) 1/4" 3/8"								
I.D. (mm) 6 10								
O.D. (in) 5/8" 3/4"								
O.D. (mm) 16 19								
25 25	*N515-14-16C	8	17.62	16.12	9.12	48	83	N203
8 8		203	448	409	232	22	38	
35 35	*N515-16-17C	10.5	18.5	17	9.12	51	86	N203
11 11		267	470	432	232	23	39	
50 50	*N515-19-20J	10.5	20.75	20	10.62	63	98	N203
15 15		267	527	508	270	29	44	
75 75	*N515-23-24J	15.5	23.75	24	12.62	75	110	N203
23 23		394	603	610	321	34	50	

Specifications subject to change.

Notes:

1. Reel models and capacities shown are for standard drag applications; for vertical lift applications consult factory.

2. Other sizes, from standard components, available on request.

*UPS shippable = Net wt. plus carton wt.

Series N600/600

Spring Rewind Dual Hose Reels To handle dual 1/4" through 3/4" I.D. hose.

Dual-hose spring rewind reels are available in two frame configurations. The N series has a narrow frame and compact mounting base. The rollformed channel frame for heavy-duty applications is available in the 600 series, and must be specified. (Delete prefix N for Rollformed Channel Frame.)

Series N600 and 600 reels have two swivel joint inlets and two outlet risers to handle two equal lengths of hose. Hoses can be different diameters, in which case the larger hose diameter determines the capacity of the reel.

Reels are available for use with oxygen/acetylene.
See Hannay Reels Welding Catalog H-9422-W.

Rewind:

A heavy-duty spring motor provides self-contained rewind power. A non-sparking ratchet assembly locks the reel when the desired length of hose has been payed out. A pull on the hose unlocks the reel and the spring motor retracts the hose. A declutching arbor is provided to prevent damage from reverse winding.

Inlets:

Standard inlets are 90° balanced pressure swivel joints with 1/2" female NPT threads. Where flow rates are critical specify full flow swivel joints and advise seal compatibility (overall Dimension may change).

Outlets:

Standard outlets are 1/2" female NPT threads.

Other sizes and/or threads can be furnished and must be specified.

Operating Pressures & Temperatures:

These reels operate at pressures to 3000 psi (207 bar) and handle product temperatures from -20° F to +225° F (-29°C to +107°C).

Reels to operate at other pressures and temperatures can be furnished at extra cost.

Rollers:

All models are supplied with a 4-way roller assembly. Roller position must be specified. (See Ordering Guide & Accessory Catalog.)

Hose Stop:

A hose stop should be used to prevent damage to rollers and nozzles and to permit adjustment of free hose length. (See Ordering Guide & Accessory Catalog.)

Finish: Refer to page 4.

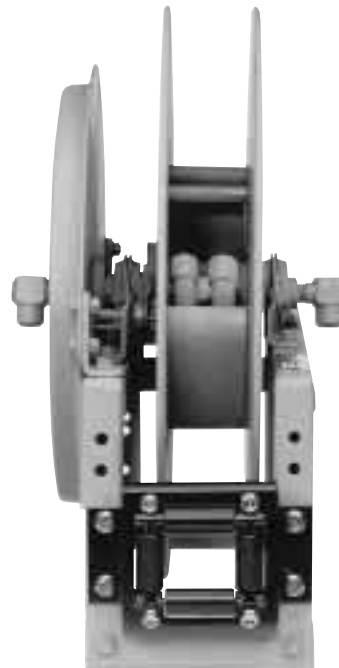
**For Constant Tension Applications
Consult Factory.**



For:

- Hydraulics
- Air/Water
- Paint Spraying

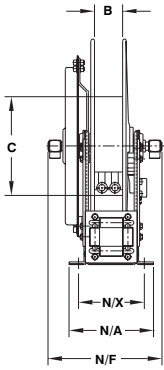
Series N600



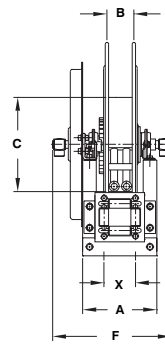
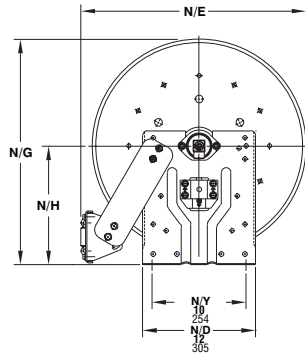
Series 600

Standard Configuration Shown

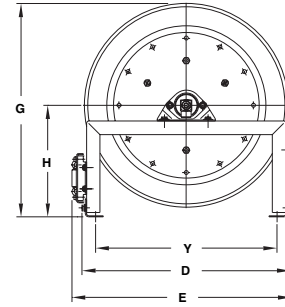
Dimensions and capacities



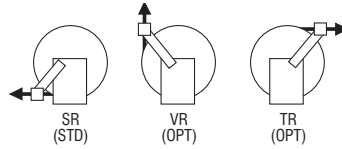
Series N600 Narrow Frame



Series 600 Rollformed Channel Frame



Roller Positions Available



BE SURE TO CHECK DIMENSIONS AND WEIGHTS PRIOR TO ORDERING.

To receive a detailed parts breakdown drawing for Series N600, request ISO 80, for Series 600, request ISO 8.

Hose Capacity of Reel					Model Number	Reel Dimensions															Approx. Weight		Roller Assy Supplied on Standard Models	
feet m.						inches mm.															lb.	kg.		
I.D. (in)	1/4"	3/8"	1/2"	3/4"	Delete prefix N for Rollformed Channel Frame	A	N/A	B	C	D	E	N/E	F	N/F	G	N/G	H	N/H	N/X	X	Y	NET	SHIP	
I.D. (mm)	6	10	13	19		x, y indicate mounting holes. See page 2.																		
O.D. (in)	5/8"	3/4"	7/8"	1 1/32"																				
2/35	2/35	2/20	-		N615-19-20C	8.25	9	3	10.5	18	19.5	20.75	13.0	11.75	19.75	20	10.38	10.62	7	3.5	15	63	78	N203
2/11	2/11	2/6	-			210	229	76	267	457	495	527	330	298	502	508	264	270	178	89	381	28.6	35.4	
2/50	2/50	2/25	-		N617-19-20J	10.25	11	5	10.5	18	19.5	20.75	15.0	13.75	19.75	20	10.38	10.62	9	5.5	15	66	86	N205
2/15	2/15	2/8	-			260	279	127	267	457	495	527	381	349	502	508	264	270	229	140	381	29.9	39	
2/65	2/60	2/30	-		N615-23-24B	8.25	9	3	10.5	23.25	24.38	23.75	13.0	11.75	23.88	24	12.5	12.62	7	3.5	20.25	87	104	N203
2/20	2/18	2/9	-			210	229	76	267	591	619	603	330	298	607	610	318	321	178	89	514	39.5	47.2	
2/75	2/75	2/50	-		N617-25-26B	10.25	11	5	15.5	25	26.12	25.25	15.0	13.75	25.88	26	13.5	13.62	9	5.5	22	93	128	N205
2/23	2/23	2/15	-			260	279	127	394	635	663	641	381	349	657	660	343	346	229	140	559	42.2	58.1	
2/100	2/85	-	-		N617-25-26A	10.25	11	5	15.5	25	26.12	25.25	15.75	14.5	25.88	26	13.5	13.62	9	5.5	22	120	155	N205
2/31	2/26	-	-			260	279	127	394	635	663	641	400	368	657	660	343	346	229	140	559	54.4	70.3	
-	-	2/100	2/50		† 618-30-31A	11.25	-	6	15.5	28.5	29.62	-	21.75	-	31.38	-	17	-	-	6.5	25.5	130	165	R206
-	-	2/31	2/15			286	-	152	394	724	752	-	552	-	797	-	432	-	-	165	648	59	74.8	

Specifications subject to change.

Notes:

1. Reel models and capacities shown are for standard drag applications; for vertical lift or constant tension applications consult factory.

2. Many other sizes, from standard components, available on request.

† Standard inlets on this model reel are 90° swivel joints with 1" NPT threads, standard outlets are 3/4" female NPT threads.

Series N700/700N

Spring Rewind Reels To handle 3/8" or 1/2" I.D. hose.

Single hose spring rewind reels are available in two frame configurations. The standard N Series has a narrow frame and compact mounting base. The rollformed channel frame for heavy-duty applications is available in the 700 series, and must be specified. (Delete prefix N for Rollformed Channel Frame.)

Rewind:

A heavy-duty spring motor provides self-contained rewind power. A non-sparking ratchet assembly locks the reel when the desired length of hose has been payed out. A pull on the hose unlocks the reel and the spring motor retracts the hose. A declutching arbor is provided to prevent damage from reverse winding.

Inlet:

Standard inlet is 90° swivel joint with 1/2" female NPT threads.

Outlet:

Standard outlet is 1/2" female NPT threads.

Other sizes and/or threads can be furnished and must be specified.

Operating Pressures & Temperatures:

These reels operate at pressures to 3000 psi (207 bar) and handle product temperatures from -20° F to +225° F (-29° C to +107° C).

Reels to operate at other pressures and temperatures can be furnished at extra cost.

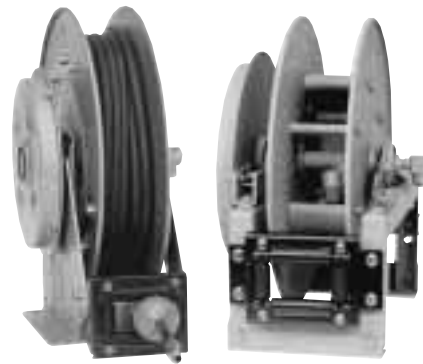
Rollers:

All models are supplied with a 4-way roller assembly. Roller position must be specified. (See Ordering Guide & Accessory Catalog.)

Hose Stop:

A hose stop should be used to prevent damage to rollers and nozzles and to permit adjustment of free hose length. (See Ordering Guide & Accessory Catalog.)

Finish: Refer to page 4.

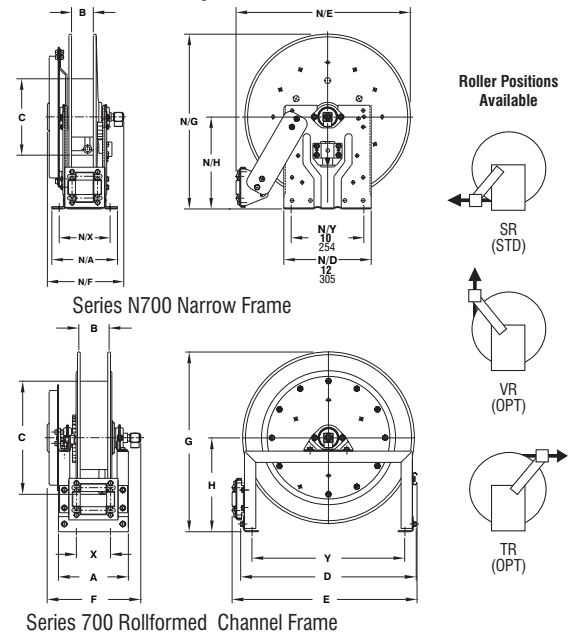


Series N700 Series 700
Standard Configuration Shown

For:

- Lubrication
- Air/Water
- Assembly Operations
- General Industrial Applications
- Washdown
- Air Tools

Dimensions and capacities



BE SURE TO CHECK DIMENSIONS AND WEIGHTS PRIOR TO ORDERING.

To receive a detailed parts breakdown drawing for Series N700, request ISO 79, for Series 700, request ISO 66.

Hose Capacity of Reel				Model Number	Reel Dimensions														Approx. Weight	Roller Assy Supplied on Standard Models			
feet m.					inches mm.																lb. kg.		
I.D. (in)	1/4"	3/8"	1/2"	Delete prefix N for Rollformed Channel Frame	A	N/A	B	C	D	E	N/E	F	N/F	G	N/G	H	N/H	N/X	X	Y		* NET	SHIP
I.D. (mm)	6	10	13																			WT.	
O.D. (in)	5/8"	3/4"	7/8"																				
O.D. (mm)	16	19	22																				
	25	25		*N716-14-16C	-	10	4	8	-	-	17.62	-	11.25	-	16.12	-	9.12	8	-	-	52	87	N204
	8	8			-	254	102	203	-	-	448	-	286	-	409	-	232	203	-	-	24	39	
	35	35		*N716-16-17C	9.25	10	4	10.5	17.5	18.62	18.5	12.75	11.25	17.75	17	9.88	9.12	8	4.5	14.5	55	71	N204
	11	11			235	254	102	267	445	473	470	324	286	451	432	251	232	203	114	368	25	32	
	50	50		*N716-19-20J	9.25	10	4	10.5	18	19.5	20.75	12.75	11.25	19.75	20	10.38	10.62	8	4.5	15	64	85	N204
	15	15			235	254	102	267	457	495	527	324	286	502	508	264	270	203	114	381	29	38	
	100	75	65	*N716-23-24G	9.25	10	4	15.5	23.25	24.38	23.75	12.75	11.25	23.88	24	12.5	12.62	8	4.5	20.25	94	129	N204
	30	23	20		235	254	102	394	591	619	603	324	286	607	610	318	321	203	114	514	43	59	
	65	65		*N716-23-24J	9.25	10	4	15.5	23.25	24.38	23.75	12.75	11.25	23.88	24	12.5	12.62	8	4.5	20.25	79	96	N204
	20	20			235	254	102	394	591	619	603	324	286	607	610	318	321	203	114	514	36	44	
	75	75		N716-25-26B	9.25	10	4	15.5	25	26.12	25.25	12.75	11.25	25.88	26	13.5	13.62	8	4.5	22	90	125	N204
	23	23			235	254	102	394	635	663	641	324	286	657	660	343	346	203	114	559	41	57	
	100	100		N718-25-26G	11.25	12	6	15.5	25	26.12	25.25	14.75	13.25	25.88	26	13.5	13.62	10	6.5	22	96	131	N206
	30	30			286	305	152	394	635	663	641	375	337	657	660	343	346	254	165	559	44	59	
	150	125		718-30-31-20D	11.25	-	6	20	28.5	29.62	-	15.5	-	31.38	-	17	-	-	6.5	25.5	112	147	R206
	46	38			286	-	152	508	724	752	-	394	-	797	-	432	-	-	165	648	51	67	

Specifications subject to change.

Notes:

1. Reel models and capacities shown are for standard drag applications; for vertical lift

or constant tension applications consult factory.

2. Other sizes, from standard components, available on request.

*UPS shippable = Net wt. plus carton wt.

Series N800/800

Spring Rewind Reels To handle 3/4" or 1" I.D. hose.

Single hose spring rewind reels are available in two frame configurations. The standard N series has a narrow frame and compact mounting base. The rollformed channel frame for heavy-duty applications is available in the 800 series and must be specified. (Delete prefix N for Rollformed Channel Frame.)

Rewind:

A heavy-duty spring motor provides self-contained rewind power. A non-sparking ratchet assembly locks the reel when the desired length of hose has been payed out. A pull on the hose unlocks the reel and the spring motor retracts the hose. A declutching arbor is provided to prevent damage from reverse winding.

Inlet:

Standard inlet is 90° swivel joint with 1" female NPT threads.

Outlet:

Standard outlet is 1" female NPT threads.

Other sizes and/or threads can be furnished and must be specified.

Operating Pressures & Temperatures:

These reels operate at pressures to 1000 psi (69 bar) and handle product temperatures from -20° F to +225° F (-29° C to +107° C).

Reels to operate at other pressures and temperatures can be furnished at extra cost.

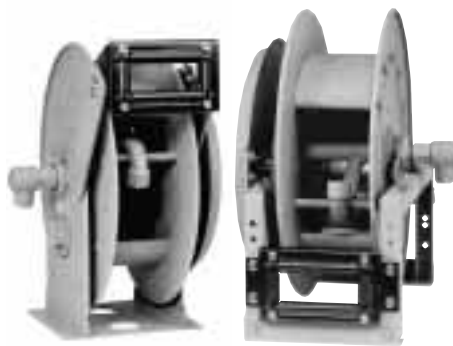
Rollers:

All models are supplied with a 4-way roller assembly. Roller position must be specified. (See Ordering Guide & Accessory Catalog.)

Hose Stop:

A hose stop should be used to prevent damage to rollers and nozzles and to permit adjustment of free hose length. (See Ordering Guide & Accessory Catalog.)

Finish: Refer to page 4.

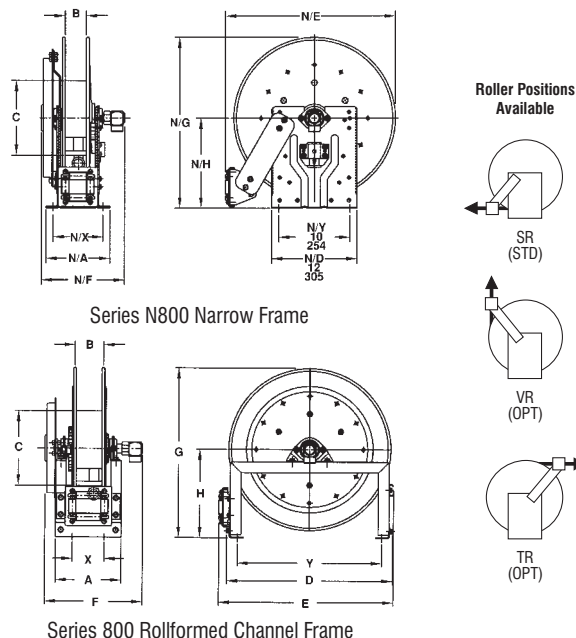


Series N800 Series 800 Standard Configuration Shown

For:

- Fuel Dispensing
- Waste Oil Evacuation
- Air/Water

Dimensions and capacities



BE SURE TO CHECK DIMENSIONS AND WEIGHTS PRIOR TO ORDERING.

To receive a detailed parts breakdown drawing for Series N800, request ISO 81, for Series 800, request ISO 42.

Hose Capacity of Reel			Model Number	Reel Dimensions																Approx. Weight		Roller Assy Supplied on Standard Models
feet m.				inches mm.																lb.	kg.	
I.D. (in)	3/4"	1"	Delete prefix N for Channel Frame	A	N/A	B	C	D	E	N/E	F	N/F	G	N/G	H	N/H	N/X	X	Y	NET	SHIP	
19	19	25																				
O.D. (in)	1 9/32"	1 9/16"																				
O.D. (mm)	33	40																				
25	15		*N816-19-20J	9.25	10	4	10.5	18	19.5	20.75	13.5	13	19.75	20	10.38	10.62	8	4.5	15	63	91	N204
8	5			235	254	102	267	457	495	527	343	330	502	508	264	270	203	114	381	29	41	
50	25		N818-23-24J	11.25	12	6	10.5	23.25	24.38	23.75	15.5	15	23.88	24	12.5	12.62	10	6.5	20.25	87	100	N204
15	8			286	305	152	267	591	619	603	394	381	607	610	318	321	254	165	514	39	45	
60	35		N816-25-26B	9.25	10	4	10.5	25	26.12	25.25	13.5	13	25.88	26	13.5	13.62	8	4.5	22	96	131	N204
18	11			235	254	102	267	635	663	641	343	330	657	660	343	346	203	114	559	44	59	
70	50		N818-25-26B	11.25	12	6	10.5	25	26.12	25.25	15.5	15	25.88	26	13.5	13.62	10	6.5	22	102	137	N206
21	15			286	305	152	267	635	663	641	394	381	657	660	343	346	254	165	559	46	62	
85	75		820-25-26A	13.25	-	8	15.5	25	27	-	18.25	-	25.88	-	13.5	-	-	8.5	22	131	166	R308
26	23			337	-	203	394	635	686	-	464	-	657	-	343	-	-	216	559	59	75	
100	100		820-30-31A	13.25	-	8	15.5	28.5	30.5	-	18.25	-	31.38	-	17	-	-	8.5	25.5	137	172	R308
30	30			337	-	203	394	724	775	-	464	-	797	-	432	-	-	216	648	62	78	

Specifications subject to change.

Notes:

1. Reel models and capacities shown are for standard drag applications; for vertical lift

or constant tension applications consult factory.

2. Other sizes, from standard components, available on request.

* UPS shippable = Net wt. plus carton wt.

Series 900

Spring Rewind Reels To handle 1-1/4" or 1-1/2" I.D. hose.

The 900 series has rollformed channel frame construction to handle 1-1/4" or 1-1/2" ID hose.

Rewind:

A heavy-duty spring motor provides self-contained rewind power. A non sparking ratchet assembly locks the reel when the desired length of hose has been payed out. A pull on the hose unlocks the reel and the spring motor retracts the hose. A declutching arbor is provided to prevent damage from reverse winding.

Inlet:

Standard inlet is 90° swivel joint with 1-1/2" female NPT threads and 2" victaulic groove.

Outlet:

Standard outlet is 1-1/2" female NPT threads.

Other sizes and/or threads can be furnished and must be specified.

Operating Pressures & Temperatures:

These reels operate at pressures to 600 psi (41 bar) and handle product temperatures from -60° F to +175° F (-51° C to +79° C).

Reels to operate at other pressures and temperatures can be furnished at extra cost.

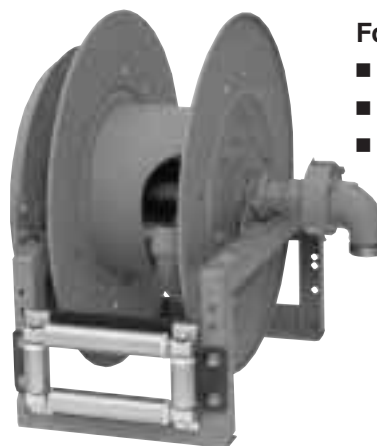
Rollers:

All models are supplied with a 4-way roller assembly. Roller position must be specified. (See Ordering Guide & Accessory Catalog.)

Hose Stop:

A hose stop should be used to prevent damage to rollers and nozzles and to permit adjustment of free hose length. (See Ordering Guide & Accessory Catalog.)

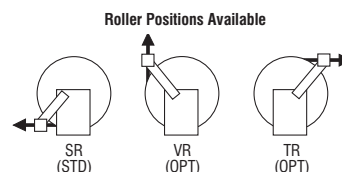
Finish: Refer to page 4.



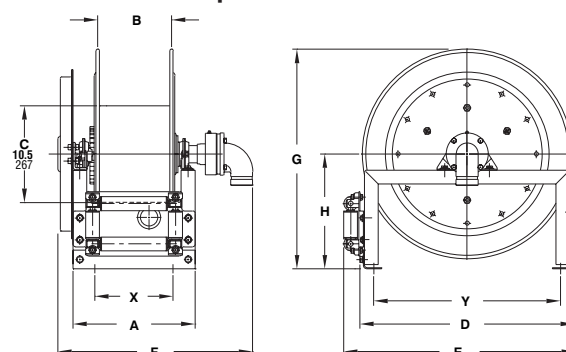
For:

- Bulk Transfer
- Fuel Dispensing
- Suction/Discharge

Series 900
Standard Configuration Shown



Dimensions and capacities



BE SURE TO CHECK DIMENSIONS AND WEIGHTS PRIOR TO ORDERING.

To receive a detailed parts breakdown drawing for Series 900, request ISO 29.

Hose Capacity of Reel			Model Number	Reel Dimensions								Approx. Weight		Roller Assy Supplied on Standard Models	
feet	m.			inches								lb.	kg.		
I.D. (in)	1 1/4"	1 1/2"	x, y indicate mounting holes. See page 2.											NET	SHIP
I.D. (mm)	32	38	A	B	D	E	F	G	H	X	Y				
O.D. (in)	1 3/16"	2 1/16"													
O.D. (mm)	46	52													
	40	25	922-23-24B	15.25	10	23.25	25.25	24	23.88	12.5	10.5	20.25	104	139	R310
	12	8		387	254	591	641	610	607	318	267	514	47	63	
	50	40	920-25-26A	13.25	8	25	27	22.75	25.88	13.5	8.5	22	127	162	R308
	15	12		337	203	635	686	578	657	343	216	559	58	73	
	75	50	922-30-31A	15.25	10	28.5	30.5	24.75	31.38	17	10.5	25.5	156	191	R310
	23	15		387	254	724	775	629	797	432	267	648	71	87	

Specifications subject to change.

Notes:

1. Reel models and capacities shown are for standard drag applications; for vertical lift or constant tension applications consult factory.
2. Other sizes, from standard components, available on request.

Compact Manual Rewind Reels To handle single 1/4" or 3/8" I.D. hose.

Lightweight yet ruggedly built reels industry-designed to fit compact spaces. Ideal for small, mobile steam cleaning and pressure wash units as well as permanent installations.

Rewind:

Direct crank rewind with the crank permanently attached to the reel axle.

Brakes and Locks:

Reels are supplied with an adjustable spring tension brake. An optional spring actuated pin lock is available at extra cost.

Inlet:

Standard inlet is 90° ball bearing swivel joint with 1/2" female NPT threads.

Outlet:

Standard outlet is 3/8" female NPT threads.

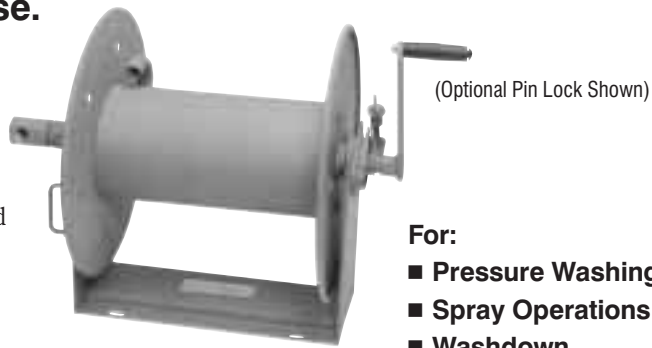
Other sizes and/or threads can be furnished and must be specified.

Operating Pressures & Temperatures:

These reels operate at pressures to 3000 psi (207 bar) and handle product temperatures from +20° F to +400° F (-7° C to +204° C).

Reels to operate at other temperatures can be furnished at extra cost.

Finish: Refer to page 4.



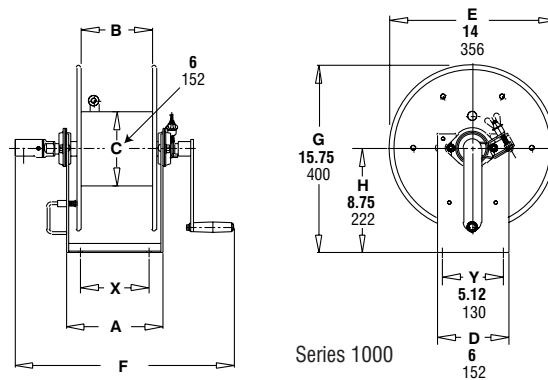
For:

- Pressure Washing
- Spray Operations
- Washdown
- Air

Series 1000

Standard Configuration Shown

Dimensions and capacities



BE SURE TO CHECK DIMENSIONS AND WEIGHTS PRIOR TO ORDERING.

To receive a detailed parts breakdown drawing for Series 1000, request ISO 165.

I.D. (in)	Hose Capacity of Reel		Model Number	Reel Dimensions				Approx. Weight	
	feet	m.		inches	mm.			lb.	kg.
				A	B	F	X	NET	SHIP
1/4"	3/8"								
I.D. (mm)	6	10							
5/8"	3/4"								
O.D. (mm)	16	19							
100	75		*1014-14-16	8.12	6	19	4	23	27
	31	23		206	152	483	102	10	12
150	100		*1016-14-16	10.12	8	21	6	24	28
	46	31		257	203	533	152	11	13
275	175		*1020-14-16	14.12	12	25	10	25	29
	84	53		359	305	635	254	11	13

Specifications subject to change.

Note: Other sizes, from standard components, available on request.

*UPS shippable = Net wt. plus carton wt.

Manual or Power Rewind Reels

Series 1500. To handle single 1/4" through 5/8" I.D. hose.

Series 1800. To handle single 1/2" through 3/4" I.D. hose.

Series 4000. To handle single 3/4" or 1" I.D. hose.

Hannay's strong, lightweight compact reels designed for long lengths of hose in manual and power rewind applications. Their compact size and many options make these reels exceptionally versatile and able to meet special requirements.

Rewind:

Manual – A direct crank rewind is permanently attached to the reel axle on Series 1500 and 1800, and is removable on Series 4000.

Power – A chain and sprocket drive is powered by electric, hydraulic, or compressed air motor. An auxiliary crank is not supplied on power rewind models but is available at extra cost when specified.

Brakes & Locks:

Series 1500 – reels with direct crank rewind are supplied with a cam lock drag brake and a spring actuated pin lock as standard.

Series 1800 and 4000 – reels with direct crank rewind are supplied with an adjustable spring tension brake and a spring actuated pin lock as standard.

Inlet:

Series 1500 – standard inlet is 90° ball bearing swivel joint with 1/2" female NPT threads.

Series 1800 and 4000 – standard inlet is 90° ball bearing swivel joint with 1" female NPT threads.

Outlet:

Series 1500 – standard outlet is 1/2" female NPT threads.

Series 1800 – standard outlet is 3/4" female NPT threads.

Series 4000 – standard outlet is 1" female NPT threads.

Other sizes and/or threads, including male GHT threads, can be furnished and must be specified.

Standard inlet, outlet riser and hub assembly are steel. These components can be supplied in stainless steel, at extra cost, to meet special product handling requirements such as breathing air. (Consult factory)

Optional Rollers:

Rollers may be purchased as accessory items. Specify roller position when ordering. Mounting brackets are necessary. (See Ordering Guide & Accessory Catalog).

Operating Pressures & Temperatures:

Series 1500 - these operate at pressures to 3000 psi (207 bar) and handle product temperatures from +20° F to +400° F (-7° C to +204° C).

Series 1800 and 4000 - these reels operate at pressures to 1000 psi (69 bar) and handle product temperatures from -80° F to +185° F (-62° C to +85° C).

Reels to operate at other pressures and temperatures can be furnished at extra cost.

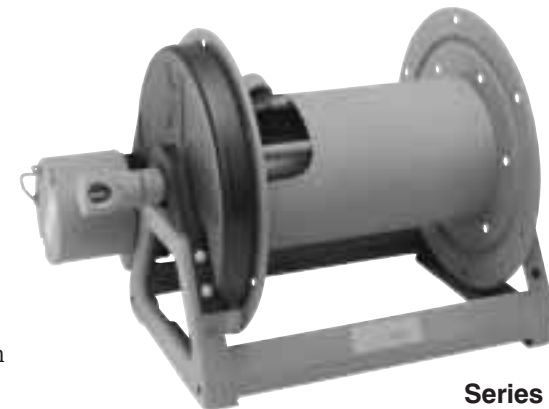
Finish: Refer to page 4.



Manual Rewind
Standard Configuration Shown



Electric Rewind
Standard Configuration Shown



Electric Rewind
Standard Configuration Shown

Series 1500

For:

- Lawn Care
- Pest Control
- Pressure Washing
- Agriculture
- Steam Cleaning

Series 1800

For:

- Air Compressors
- Washdown

Series 4000

For:

- Fuel Dispensing
- Fire Protection
- Water Supply
- Chemical Transfer

Manual or Power Rewind Reels

Series 2000. To handle dual 1/4" through 1/2" I.D. hose.

Series 7000. To handle dual 3/4" or 1" I.D. hose.

These reels have two swivel joint inlets and two outlet risers to handle two equal lengths of hose. Hoses can be different diameters, in which case the larger hose diameter determines the reel capacity.

Series 2000 is available for use with oxygen/acetylene. See Series 2400 in Hannay Reels Welding Catalog H-9422-W.

Rewind:

Series 2000 – choose MX chain-drive crank rewind or chain and sprocket drive powered by an electric, hydraulic or compressed air motor.

Series 7000 – choose gear-driven crank rewind or chain and sprocket drive powered by an electric, hydraulic or compressed air motor. An auxiliary rewind is standard on power rewinds.

Brakes & Locks:

Series 2000 – MX chain-drive crank rewind reels are supplied with a pinion brake as standard. Power rewind reels are not supplied with a brake.

Series 7000 – both gear-driven crank rewind and power rewind reels are supplied with a pinion brake as standard.

Inlets:

Series 2000 – standard inlets are 90° ball bearing swivel joints with 1/2" female NPT threads.

Series 7000 – standard inlets are 90° ball bearing swivel joints with 1" female NPT threads.

Outlets:

Series 2000 – standard outlets are 1/2" female NPT threads.

Series 7000 – standard outlets are 1" female NPT threads.

Other sizes and/or threads can be furnished and must be specified.

Optional Rollers:

Rollers may be purchased as accessory items. Specify roller position when ordering. Mounting brackets are necessary. (See Ordering Guide & Accessory Catalog).

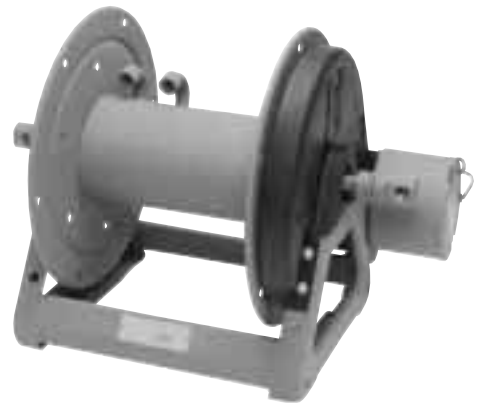
Operating Pressures & Temperatures:

Series 2000 – these reels operate at pressures to 3000 psi (207 bar) and handle product temperatures from +20° F to +400° F (-7° C to +204° C).

Series 7000 – these reels operate at pressures to 1000 psi (69 bar) and handle product temperatures from -80° F to +185° F (-62° C to +85° C).

Reels to operate at other pressures and temperatures can be furnished at extra cost.

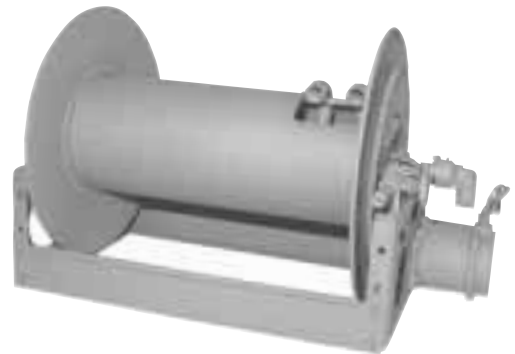
Finish: Refer to page 4.



Series 2000
Standard Configuration Shown

For:

- Hydraulics
- Air/Water

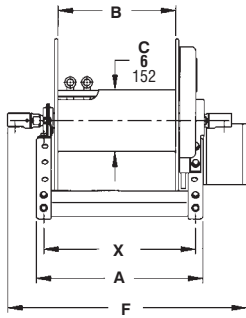


Series 7000
Standard Configuration Shown

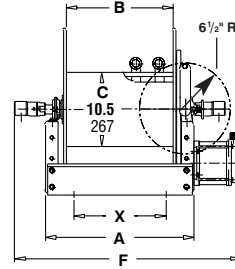
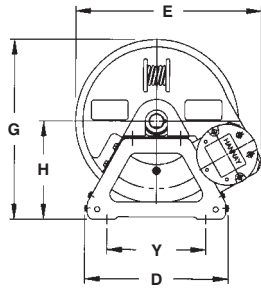
For:

- Hydraulics
- Dual Agents

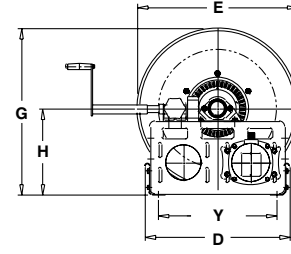
Dimensions and capacities



Series 2000



Series 7000



BE SURE TO CHECK DIMENSIONS AND WEIGHTS PRIOR TO ORDERING.

To receive a detailed parts breakdown drawing for Series 2000, request ISO 112, for Series 7000, request ISO 72.

Hose Capacity of Reel feet m.						Model Number	Reel Dimensions inches mm.																Approx. Weight Crank Rewind lb. kg.	
I.D. (in)	1/4"	3/8"	1/2"	3/4"	1"		x, y indicate mounting holes. See page 2.																NET	SHIP
I.D. (mm)	6	10	13	19	25	For Power Rewind See Note 5	A	B	D	E	E	E	E	F	F	F	F	G	H	X	Y			
O.D. (in)	5/8"	3/4"	7/8"	1 1/32"	1 9/16"		CRANK	ELEC.	AIR	HYD	CRANK	ELEC.	AIR	HYD										
O.D. (mm)	16	19	22	33	40																			
2/125	2/100	2/50	-	-	-	*2016-17-18	13	8	14.5	18.5	19	19	19	21	20.75	20.25	20.75	18.12	9.88	11.5	10	32	40	
2/38	2/31	2/15	-	-	-		330	203	368	470	483	483	483	533	527	514	527	460	251	292	254	15	18	
2/200	2/150	2/100	-	-	-	*2020-17-18	17	12	14.5	18.5	19	19	19	25	24.75	24.25	24.75	18.12	9.88	15.5	10	34	42	
2/61	2/46	2/31	-	-	-		432	305	368	470	483	483	483	635	629	616	629	460	251	394	254	15	19	
2/300	2/225	2/150	-	-	-	*2026-17-18	23	18	14.5	18.5	19	19	19	31	30.75	30.25	30.75	18.12	9.88	21.5	10	36	44	
2/91	2/69	2/46	-	-	-		584	457	368	470	483	483	483	787	781	768	781	460	251	546	254	16	20	
2/375	2/250	2/175	-	-	-	*2030-17-18	27	22	14.5	18.5	19	19	19	35	34.75	34.25	34.75	18.12	9.88	25.5	10	37	45	
2/114	2/76	2/53	-	-	-		686	559	368	470	483	483	483	889	883	870	883	460	251	648	254	17	20	
2/475	2/350	2/250	-	-	-	2036-17-18	33	28	14.5	18.5	19	19	19	41	40.75	40.25	40.75	18.12	9.88	31.5	10	39	47	
2/145	2/107	2/76	-	-	-		838	711	368	470	483	483	483	1041	1035	1022	1035	460	251	800	254	18	21	
-	-	-	2/60	2/25	-	7024-19-21	21	15.5	20.5	21.88	21.88	21.88	21.88	29.75	32.12	29.75	30	21.5	12.12	13	16.75	100	142	
-	-	-	2/18	2/8	-		533	394	521	556	556	556	556	756	816	756	762	546	308	330	425	45	64	
-	-	-	2/90	2/50	-	7026-23-24	23	17.5	20.5	23	23	23	23	31.75	34.12	31.75	32	23.5	12.12	15	16.75	105	147	
-	-	-	2/27	2/15	-		584	445	521	584	584	584	584	806	867	806	813	597	308	381	425	48	67	
-	-	-	2/40	2/30	-	7016-25-26	13	7.5	25.5	24.75	24.75	24.75	24.75	21.75	24.12	21.75	22	27.88	15.5	5	21.75	95	145	
-	-	-	2/12	2/9	-		330	191	648	629	629	629	629	552	613	552	559	708	394	127	552	43	66	
-	-	-	2/175	2/100	-	7032-25-26	29.5	24	25.5	24.75	24.75	24.75	24.75	38.25	40.62	38.25	38.5	27.88	15.5	21.5	21.75	129	179	
-	-	-	2/53	2/31	-		749	610	648	629	629	629	629	972	1032	972	978	708	394	546	552	59	81	
-	-	-	2/300	2/150	-	† 7032-30-31	29.5	24	25.5	28.75	28.75	28.75	28.75	38.25	40.62	38.25	38.5	29.88	15.5	21.5	21.75	137	187	
-	-	-	2/91	2/46	-		749	610	648	730	730	730	730	972	1032	972	978	759	394	546	552	62	85	
-	-	-	2/225	2/115	-	† 7024-33-34	20.5	15.5	31.5	31.75	31.75	31.75	31.75	29.75	32.12	29.75	29.75	33.62	17.75	13	27.75	120	170	
-	-	-	2/69	2/35	-		521	394	800	806	806	806	806	756	816	756	756	854	451	330	705	54	77	
-	-	-	2/350	2/200	-	† 7032-33-34	29	24	31.5	31.75	31.75	31.75	31.75	38.25	40.62	38.25	38.25	33.62	17.75	21.5	27.75	137	187	
-	-	-	2/107	2/61	-		737	610	800	806	806	806	806	972	1032	972	972	854	451	546	705	62	85	

Specifications subject to change.

Notes:

- Upon request, reels can be supplied with drum lengths other than shown and with disc sizes in other diameters.
- Dimensions shown for Series 7000 up to and including 30-31 disc size reflect pressed frames. All others are channel frames.
- Weights shown in chart are for crank rewind models. ADD these amounts for power rewind models:

	Net (lbs.)	Ship (lbs.)	Net (kg.)	Ship (kg.)
Series 2000				
Electric	18	18	8.2	8.2
Hydraulic	15	15	6.8	6.8
Air	15	15	6.8	6.8

Series 7000

	Net (lbs.)	Ship (lbs.)	Net (kg.)	Ship (kg.)
Electric	40	40	18.1	18.1
Hydraulic	20	20	9.1	9.1
Air	20	20	9.1	9.1

- Dimension "F" is the overall length of standard model reels. On Series 2000, MX chain drive crank models, the dimension shown is the crank in rewind position. 2000 series reels require 2" clearance to remove crank handle.

- When ordering, prefix model number with:
A = Air Rewind E = Electric Rewind (2000 Series) MX = Chain Drive Crank
EP = Electric Rewind (7000 Series) HD = Hydraulic Rewind
(Air rewind reels are supplied with control valve and hose; 12v and 24v DC rewind reels are supplied with switch and solenoid; 115v AC rewind reels are not supplied with switch but can be ordered separately; hydraulic rewind reels are not supplied with control valve.)

*UPS shippable = Net wt. plus carton wt.

† Some applications require a clutch/reduction unit.

Series 6000

Manual or Power Rewind Reels To handle single 1/2" through 1" I.D. hose.

A strong, heavy-duty reel for longer lengths of hose. Frame designed primarily for various power rewind options. A versatile reel adaptable to many applications.

Rewind:

Choose gear-driven crank rewind or chain and sprocket drive powered by an electric, hydraulic or compressed air motor. Gear-driven mechanism with pinion shaft brake can be specified as auxiliary crank rewind on power rewind reels, at extra cost.

Brakes & Locks:

Crank rewind reels will be supplied with pinion brake and power rewind reels with a comet brake. Other brakes and locking devices may be specified. (See Ordering Guide & Accessory Catalog.)

Inlet:

Standard inlet is a 90° ball bearing swivel joint with 1" female NPT threads.

Outlet:

Standard outlet is 1" female NPT threads.

Other sizes and/or threads can be furnished and must be specified.

Standard inlet, outlet riser, and hub assembly are steel. Optional bronze or aluminum swivel joint and stainless steel hub assembly and riser, are available at extra cost, to meet special product handling requirements.

Optional Rollers:

Rollers may be purchased as accessory items. Specify roller position when ordering. Mounting brackets are necessary. (See Ordering Guide & Accessory Catalog.)

Operating Pressures & Temperatures:

These reels operate at pressures to 1000 psi (69 bar) and handle product temperatures from -80° F to +185° F (-62° C to +85° C).

Reels to operate at other pressures and temperatures can be furnished at extra cost.

Finish: Refer to page 4.



Electric Rewind

Series 6000

Standard Configuration Shown

For:

- Fuel Dispensing
- Spray Operations
- Fire Protection
- Water Blasting*
- Sewer Cleaning*

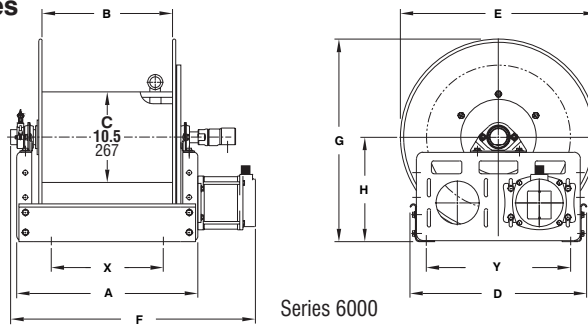
***Heavy-duty construction required.
Consult factory.**

Optional Auxiliary Rewind



Ring and pinion shaft rewind unit
with removable crank handle

Dimensions and capacities



BE SURE TO CHECK DIMENSIONS AND WEIGHTS PRIOR TO ORDERING.
To receive a detailed parts breakdown drawing for Series 6000, request ISO 84.

Hose Capacity of Reel <u>feet</u> m.				Model Number	Reel Dimensions <u>inches</u> mm.												Approx. Weight Crank Rewind <u>lb.</u> kg. See Note 3	
I.D. (in)	1/2"	3/4"	1"	For Power Rewind See Note 4	A	B	D	E	F	F	F	F	G	H	X	Y	NET	SHIP
I.D. (mm)	13	19	25															
O.D. (in)	7/8"	1 9/32"	1 9/16"															
O.D. (mm)	22	33	40						CRANK	ELEC.	AIR	HYD						
	235	125	60	6024-19-21	21	15.5	20.5	18.75	25.38	28.5	26.12	26.38	21.5	12.12	13	16.75	85	127
	72	38	18		533	394	521	476	645	724	663	670	546	308	330	425	39	58
	350	200	100	6032-19-21	29.5	24	20.5	18.75	33.88	37	34.62	34.88	21.5	12.12	21.5	16.75	102	144
	107	61	30		749	610	521	476	861	940	879	886	546	308	546	425	46	65
	450	185	100	6024-23-24	21	15.5	20.5	22.75	25.38	28.5	26.12	26.38	23.5	12.12	13	16.75	92	134
	137	56	30		533	394	521	578	645	724	663	670	597	308	330	425	42	61
	700	250	150	6030-23-24	27.5	22	20.5	22.75	31.88	35	32.62	32.88	23.5	12.12	19.5	16.75	105	147
	213	76	46		699	559	521	578	810	889	829	835	597	308	495	425	48	67
	900	350	200	6038-23-24	35	29.5	20.5	22.75	39.38	42.5	40.12	40.38	23.5	12.12	27.5	16.75	120	162
	274	107	61		889	749	521	578	1000	1080	1019	1026	597	308	699	425	54	73
	285	100	60	6016-25-26	13	7.5	25.5	24.75	17.38	20.5	18.12	18.38	27.88	15.5	5	21.75	88	130
	87	30	18		330	191	648	629	441	521	460	467	708	394	127	552	40	59
	500	200	100	6022-25-26	19	13.5	25.5	24.75	23.38	26.5	24.12	24.38	27.88	15.5	11	21.75	100	142
	152	61	30		483	343	648	629	594	673	613	619	708	394	279	552	45	64
	750	300	200	6028-25-26	25.5	20	25.5	24.75	29.88	33	30.62	30.88	27.88	15.5	17.5	21.75	113	155
	229	91	61		648	508	648	629	759	838	778	784	708	394	445	552	51	70
	450	235	135	6018-30-31	15	9.5	25.5	28.75	19.38	22.5	20.12	20.38	29.88	15.5	7	21.75	101	151
	137	72	41		381	241	648	730	492	572	511	518	759	394	178	552	46	68
	800	400	200	6024-30-31	21	15.5	25.5	28.75	25.38	28.5	26.12	26.38	29.88	15.5	13	21.75	113	163
	244	122	61		533	394	648	730	645	724	663	670	759	394	330	552	51	74
	-	500	265	6028-30-31	25.5	20	25.5	28.75	29.88	33	30.62	30.88	29.88	15.5	17.5	21.75	121	171
	-	152	81		648	508	648	730	759	838	778	784	759	394	445	552	55	78
	-	550	300	† 6030-30-31	27.5	22	25.5	28.75	31.88	35	32.62	32.88	29.88	15.5	19.5	21.75	125	175
	-	168	91		699	559	648	730	810	889	829	835	759	394	495	552	57	79
	-	600	350	† 6028-33-34	25	20	31.5	31.75	29.62	32.75	30.62	31.12	33.62	17.75	17.5	27.75	129	179
	-	183	107		635	508	800	806	752	832	778	790	854	451	445	705	59	81

Specifications subject to change.

Notes:

- Upon request, reels can be supplied with drum lengths other than shown and with disc sizes in other diameters.
- Dimensions shown for reels up to and including 30-31 disc size reflect pressed frames. All others are channel frames.
- Weights shown in chart are for crank rewind models. ADD these amounts for power rewind models:

	Net (lbs.)	Ship (lbs.)	Net (kg.)	Ship (kg.)
Electric 1/2 HP	40	40	18.1	18.1
Hydraulic	20	20	9.1	9.1
Air	20	20	9.1	9.1

- When ordering power rewind models, prefix model number with:

A = Air Rewind EP = Electric Rewind (1/2 hp) HD = Hydraulic Rewind
(Air rewind reels are supplied with control valve and hose; 12v and 24v DC rewind reels are supplied with switch and solenoid; 115v AC rewind reels are not supplied with switch but can be ordered separately; hydraulic rewind reels are not supplied with control valve.)

- Some applications require a clutch/reduction unit.

Manual Rewind Reels

Series 3000. To handle 3/4" or 1" I.D. hose.

Series 3500. To handle 1-1/4" or 1-1/2" I.D. hose.

Economical manual rewind reels for long lengths of hose. Designed for specific non-powered applications.

Rewind:

Choose disc rewind or removable direct crank rewind.

Brakes & Locks:

Reels are supplied with spring-actuated pin lock.

Inlet:

Series 3000 – standard inlet is a 90° ball bearing swivel joint with 1" female NPT threads.

Series 3500 – standard inlet is a 90° swivel joint with 1-1/2" female NPT threads and 2" victaulic groove.

Outlet:

Series 3000 – standard outlet is 1" female NPT thread.

Series 3500 – standard outlet is a flanged riser with 1-1/2" female NPT threads.

Other sizes and/or threads can be furnished and must be specified.

Standard inlet, outlet riser and hub assembly are steel. Optional bronze or aluminum swivel joint and stainless steel hub assembly and riser, are available at extra cost, to meet special product handling requirements.

Optional Rollers:

Rollers may be purchased as accessory items. Specify roller position when ordering. Mounting brackets are necessary. (See Ordering Guide & Accessory Catalog).

Operating Pressures & Temperatures:

Series 3000 – these reels operate to 1000 psi (69 bar) and handle product temperatures from -80° F to +185° F (-62° C to +85° C).

Series 3500 – these reels operate at pressures to 600 psi (41 bar) and handle product temperatures from -60° F to +175° F (-51° C to +79° C).

Reels to operate at other pressures and temperatures can be furnished at extra cost.

Optional Finish:

Call factory for offshore/marine finishes, available at extra cost. Also, refer to page 4.



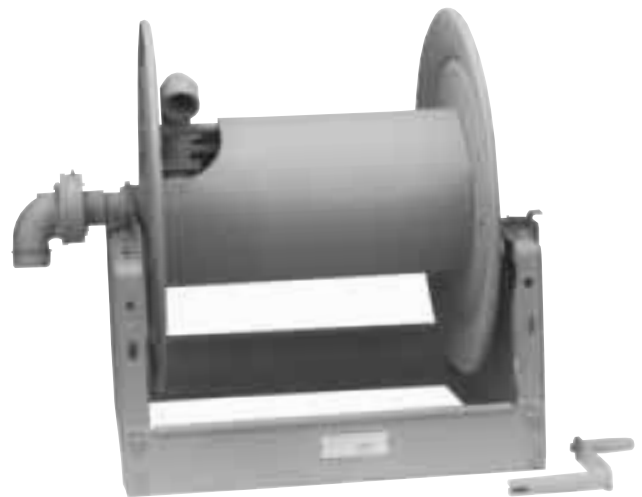
Shown with Optional Crank Handle

Series 3000

Standard Configuration Shown

For:

- Fuel Dispensing
- Spray Operations
- Fire Protection



Shown with Optional Crank Handle

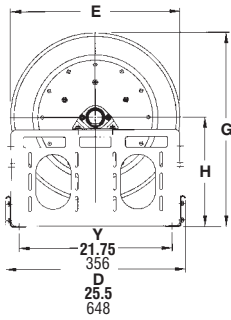
Series 3500

Standard Configuration Shown

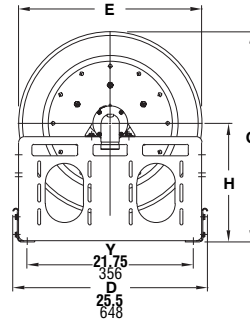
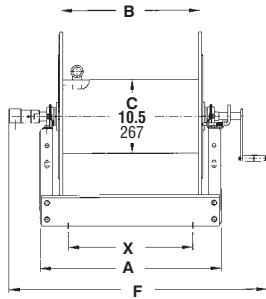
For:

- Fuel Dispensing
- Bulk Transfer
- Fire Protection

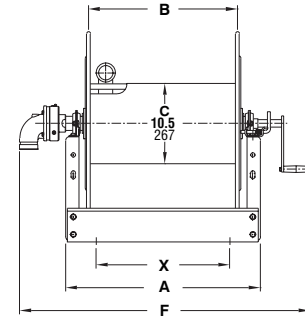
Dimensions and capacities



Series 3000



Series 3500



BE SURE TO CHECK DIMENSIONS AND WEIGHTS PRIOR TO ORDERING.

To receive a detailed parts breakdown drawing for Series 3000, request ISO 113, for Series 3500, request ISO 111.

Hose Capacity of Reel							Model Number	Reel Dimensions							Approx. Weight	
feet			m.					inches							lb.	
Round Hose			Collapsible Hose				mm.							kg.		
I.D. (in)	3/4"	1"	1 1/2"	1"	1 1/2"	1 3/4"	A	B	E	F	G	H	X	NET	SHIP	
I.D. (mm)	19	25	38	25	38	44										
O.D. (in)	1 9/32"	1 9/16"	2 1/16"	1/2" x 1 3/4"	3/4" x 3"	7/8" x 3 1/4"										
O.D. (mm)	16	19	22	25	33	40										
100	50	-	200	-	-	3016-25-26	13	7.5	24.75	23.75	27.88	15.5	5	85	120	
30	15	-	61	-	-		330	191	629	603	708	394	127	39	54	
150	100	-	300	-	-	3020-25-26	17	11.5	24.75	27.75	27.88	15.5	9	94	129	
46	30	-	91	-	-		432	292	629	705	708	394	229	43	59	
250	150	-	400	-	-	3024-25-26	21	15.5	24.75	31.75	27.88	15.5	13	103	138	
76	46	-	122	-	-		533	394	629	806	708	394	330	47	63	
300	200	-	550	-	-	3028-25-26	25.5	20	24.75	36.25	27.88	15.5	17.5	113	155	
91	61	-	168	-	-		648	508	629	921	708	394	445	51	70	
-	50	-	-	50	50	3516-25-26	13	7.5	24.75	26	27.88	15.5	5	95	130	
-	15	-	-	15	15		330	191	629	660	708	394	127	43	59	
-	100	50	-	100	75	3520-25-26	17	11.5	24.75	30	27.88	15.5	9	104	139	
-	30	15	-	30	23		432	292	629	762	708	394	229	47	63	
-	150	75	-	150	100	3524-25-26	21	15.5	24.75	34	27.88	15.5	13	113	157	
-	46	23	-	46	30		533	394	629	864	708	394	330	51	71	
-	200	100	-	200	150	3528-25-26	25.5	20	24.75	38.5	27.88	15.5	17.5	123	173	
-	61	30	-	61	46		648	508	629	978	708	394	445	56	78	
-	200	100	-	250	150	3524-30-31	21	15.5	28.75	34	29.88	15.5	13	124	174	
-	61	30	-	76	46		533	394	730	864	759	394	330	56	79	
-	250	150	-	300	250	3528-30-31	25.5	20	28.75	38.5	29.88	15.5	17.5	134	184	
-	76	46	-	91	76		648	508	730	978	759	394	445	61	83	
-	350	200	-	450	350	3534-30-31	31.5	26	28.75	44.5	29.88	15.5	23.5	147	197	
-	107	61	-	137	107		800	660	730	1130	759	394	597	67	89	
-	400	250	-	450	350	3530-33-34	27.5	22	31.75	40.5	32.38	16.5	19.5	138	188	
-	122	76	-	137	107		699	559	806	1029	822	419	495	63	85	

Specifications subject to change.

Notes:

- Upon request, reels can be supplied with drum lengths other than shown and with disc sizes in other diameters.
- Power rewind NOT available on these models.
- Dimension "F" is the overall length of standard model reels. On Series 3000 and 3500 crank rewind models, the dimension shown is with the crank in rewind position. 3/2" clearance required to remove crank.
- Subtract 5" from "F" dimension for disc rewind models.

Manual or Power Rewind Reels To handle single 1" through 1-1/2" I.D. hose.

A strong, heavy-duty reel designed for longer lengths and larger diameters of hose through 1-1/2" I.D. Frame designed primarily for various power rewind options. Versatile reel features a variety of rewind and joint options.

Rewind:

Choose gear-driven crank rewind or chain and sprocket drive powered by an electric, hydraulic or compressed air motor. Gear-driven mechanism with pinion shaft brake can be specified as auxiliary crank rewind on power rewind reels, at extra cost.

Brakes & Locks:

Crank rewind reels will be supplied with pinion brake and power rewind reels with a comet brake. Other brake and locking devices may be specified. (See Ordering Guide and Accessory Catalog.)

Inlet:

Standard inlet is a 90° ball bearing swivel joint with 1-1/2" female NPT threads and 2" victaulic groove.

Outlet:

Standard outlet is a flanged riser with 1-1/2" female NPT threads.

Other sizes and/or threads can be furnished and must be specified.

Standard inlet, outlet riser, and hub assembly are steel. Optional bronze or aluminum swivel joint and stainless steel hub assembly and riser, are available at extra cost, to meet special product handling requirements.

Optional Rollers:

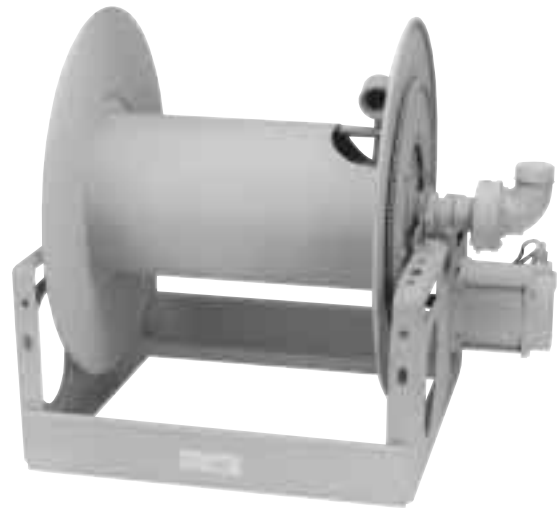
Rollers may be purchased as accessory items. Specify roller position when ordering. Mounting brackets are necessary. (See Ordering Guide & Accessory Catalog).

Operating Pressures & Temperatures:

These reels operate at pressures to 600 psi (41 bar) and handle product temperatures from -60° F to +175° F (-51° C to +79° C).

Reels to operate at other pressures and temperatures can be furnished at extra cost.

Finish: Refer to page 4.



Series 7500
Standard Configuration Shown

For:

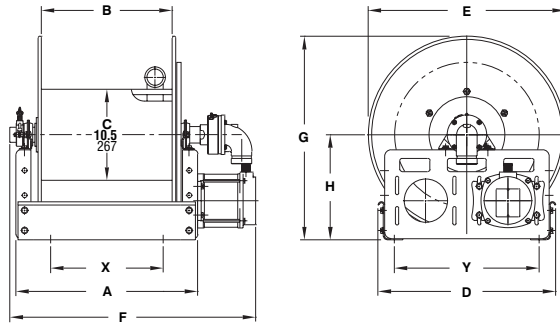
- Fuel Dispensing
- Bulk Transfer
- Suction/Discharge

Optional Auxiliary Rewind



Ring and pinion shaft rewind unit
with removable crank handle

Dimensions and capacities



Series 7500

BE SURE TO CHECK DIMENSIONS AND WEIGHTS PRIOR TO ORDERING.
To receive a detailed parts breakdown drawing for Series 7500, request ISO 18.

Hose Capacity of Reel				Model Number	Reel Dimensions												Approx. Weight					
feet m.					inches mm.												Crank Rewind lb. kg.					
				x, y indicate mounting holes. See page 2.																		
I.D. (in)	1"	1 1/4"	1 1/2"	For Power Rewind See Note 4	A	B	D	E	F	F	F	F	G	H	X	Y	NET	SHIP				
O.D. (in)	1 9/16"	1 13/16"	2 1/16"		O.D. (mm)	CRANK	ELEC.	AIR	HYD													
85	70	50	7528-19-21	25.5	20	20.5	18.75	32	33	32.75	32.75	21.5	12.12	17.5	16.75	104	146					
26	21	15		648	508	521	476	813	838	832	832	546	308	445	425	47	66					
200	190	100	7538-23-24	35	29.5	20.5	22.75	41.5	42.5	42.25	42.25	23.5	12.12	27	16.75	130	172					
61	58	30		889	749	521	578	1054	1080	1073	1073	597	308	686	425	59	78					
115	75	50	7520-25-26	17	11.5	25.5	24.75	23.5	24.5	24.25	24.25	27.88	15.5	9	21.75	106	148					
35	23	15		432	292	648	629	597	622	616	616	708	394	229	552	48	67					
200	135	100	7528-25-26	25.5	20	25.5	24.75	32	33	32.75	32.75	27.88	15.5	17.5	21.75	123	165					
61	41	30		648	508	648	629	813	838	832	832	708	394	445	552	56	75					
190	160	100	7522-30-31	19	13.5	25.5	28.75	25.5	26.5	26.25	26.25	29.88	15.5	11	21.75	118	168					
58	49	30		483	343	648	730	648	673	667	667	759	394	279	552	54	76					
285	260	160	† 7528-30-31	25.5	20	25.5	28.75	32	33	32.75	32.75	29.88	15.5	17.5	21.75	131	181					
87	79	49		648	508	648	730	813	838	832	832	759	394	445	552	59	82					
335	200	200	† 7526-33-34	22.5	17.5	31.5	31.75	29.25	30.25	30.25	30.25	33.62	17.75	15	27.75	133	183					
102	61	61		572	445	800	806	743	768	768	768	854	451	381	705	60	83					

Specifications subject to change.

Notes:

- Upon request, reels can be supplied with drum lengths other than shown and with disc sizes in other diameters.
- Dimensions shown for reels up to and including 30-31 disc size reflect pressed frames. All others are channel frames.
- Weights shown in chart are for crank rewind models. ADD these amounts for power rewind models:

	Net (lbs.)	Ship (lbs.)	Net (kg.)	Ship (kg.)
Electric	40	40	18.1	18.1
Hydraulic	20	20	9.1	9.1
Air	20	20	9.1	9.1

- When ordering power rewind models, prefix model number with:

A = Air Rewind EP = Electric Rewind (1/2 hp) HD = Hydraulic Rewind
(Air rewind reels are supplied with control valve and hose; 12v and 24v DC rewind reels are supplied with switch and solenoid; 115v AC rewind reels are not supplied with switch but can be ordered separately; hydraulic rewind reels are not supplied with control valve.)

- Some applications require a clutch/reduction unit.

Manual or Power Rewind Reels To handle single 1-1/2" or 2" I.D. hose.

A strong, heavy-duty reel designed for longer lengths and larger diameters of hose through 2" I.D. Rugged, industrial-duty channel frame construction. Versatile reel features a variety of rewind and joint options.

Rewind:

Choose gear-driven crank rewind or chain and sprocket drive powered by an electric, hydraulic or compressed air motor. A gear-driven mechanism with pinion shaft brake can be specified as auxiliary crank rewind on power rewind reels, at extra cost.

Brakes & Locks:

Crank rewind reels will be supplied with a pinion brake and power rewind reels with a comet brake. Other brakes and locking devices may be specified. (See Ordering Guide & Accessory Catalog.)

Inlet:

Standard inlet is a 90° ball bearing swivel joint with 2" female NPT threads.

Outlet:

Standard outlet is a flanged riser with 2" female NPT threads.

Other sizes and/or threads can be furnished and must be specified.

Standard inlet, outlet riser, and hub assembly are steel. Optional bronze or aluminum swivel joint and stainless steel hub assembly and riser, are available at extra cost, to meet special product handling requirements.

Optional Rollers:

Rollers may be purchased as accessory items. Mounting brackets are necessary. Specify roller position when ordering. (See Ordering Guide & Accessory Catalog.)

Operating Pressures & Temperatures:

These reels operate at pressures to 600 psi (41 bar) and handle product temperatures from -60° F to +175° F (-51° C to +79° C).

Reels to operate at other pressures and temperatures can be furnished at extra cost.

Chain Clutch-Reduction Units:

These units are recommended for use on reels with 39" diameter or larger discs and/or when increased torque and slower rewind speeds are required. Factory-installed when specified or available as an accessory item for field installation. (See Ordering Guide & Accessory Catalog.)



Finish: Refer to page 4.



Shown with Optional Auxiliary Rewind

Series 8000

Standard Configuration Shown

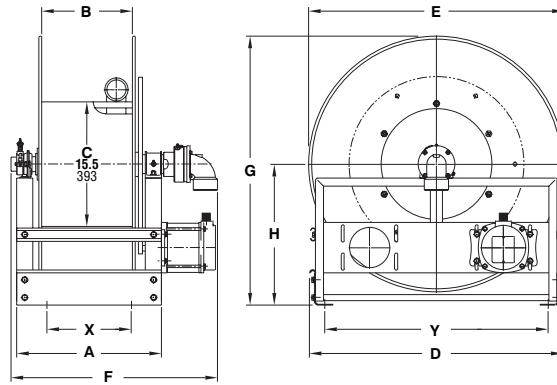
For:

- Bulk Transfer
- Chemical Transfer
- General Dispensing
- Suction/Discharge
- Fueling Applications

Refer to:

Aviation Catalog H-9448-AV
Petroleum Catalog H-9447-FD

Dimensions and capacities



Series 8000

BE SURE TO CHECK DIMENSIONS AND WEIGHTS PRIOR TO ORDERING.
To receive a detailed parts breakdown drawing for Series 8000, request ISO 35.

Hose Capacity of Reel <u>feet</u> m.			Model Number	Reel Dimensions <u>inches</u> mm.											Approx. Weight Crank Rewind <u>lb.</u> kg.		
I.D. (in)	1 1/2"	2"		x, y indicate mounting holes. See page 2.											NET	SHIP	
I.D. (mm)	38	51	For Power Rewind See Note 3	A	B	D	E	F	F	F	F	G	H	X	Y		
O.D. (in)	2 1/16"	2 9/16"		CRANK	ELEC.	AIR	HYD										
O.D. (mm)	52	65															
80	60		8234-26-27	26.25	20	27	25.75	33.75	33.25	33.25	33.25	26.62	13.75	18.75	23.25	120	170
24	18			667	508	686	654	857	845	845	845	676	349	476	591	54	77
100	75		8238-26-27	30.25	24	27	25.75	37.75	37.25	37.25	37.25	26.62	13.75	22.75	23.25	145	195
30	23			768	610	686	654	959	946	946	946	676	349	578	591	66	88
145	100		8246-26-27	38.25	32	27	25.75	45.75	45.25	45.25	45.25	26.62	13.75	30.75	23.25	196	246
44	30			972	813	686	654	1162	1149	1149	1149	676	349	781	591	89	112
85	60		8226-33-34	17.75	11.5	31.5	31.75	25.25	24.75	24.75	24.75	33.38	17.5	10.25	27.75	80	150
26	18			451	292	800	806	641	629	629	629	848	445	260	705	36	68
150	115		8234-33-34	26.25	20	31.5	31.75	33.75	33.25	33.25	33.25	33.38	17.5	18.75	27.75	133	230
46	35			667	508	800	806	857	845	845	845	848	445	476	705	60	105
200	165		8240-33-34	32.25	26	31.5	31.75	39.75	39.25	39.25	39.25	33.38	17.5	24.75	27.75	169	290
61	50			819	660	800	806	1010	997	997	997	848	445	629	705	77	132
200	140		8230-39-40	21.75	15.5	40	39	29.25	28.75	28.75	28.75	39.88	20.38	14.25	37	168	400
61	43			552	394	1016	991	743	730	730	730	1013	518	362	940	76	182
340	225		8238-39-40	30.25	24	40	39	37.75	37.25	37.25	37.25	39.88	20.38	22.75	37	218	420
104	69			768	610	1016	991	959	946	946	946	1013	518	578	940	99	191

Specifications subject to change.

Notes:

- Upon request, reels can be supplied with drum lengths other than shown and with disc sizes in other diameters.
- Weights shown in chart are for crank rewind models. ADD these amounts for power rewind models:

	Net (lbs.)	Ship (lbs.)	Net (kg.)	Ship (kg.)
Electric	40	40	18.1	18.1
Hydraulic	20	20	9.1	9.1
Air	20	20	9.1	9.1

- When ordering power rewind models, prefix model number with:

A = Air Rewind EP = Electric Rewind (1/2 HP) HD = Hydraulic Rewind
(Air rewind reels are supplied with control valve and hose; 12v and 24v DC rewind reels are supplied with switch and solenoid; 115v AC rewind reels are not supplied with switch but can be ordered separately; hydraulic rewind reels are not supplied with control valve.)

Manual or Power Rewind Reels To handle 2" through 3" I.D. hose.

A strong, heavy-duty reel designed for longer lengths and larger diameters of hose through 3" I.D. Rugged, industrial-duty channel frame construction. Versatile reel features a variety of rewind and joint options.

Rewind:

Choose gear-driven crank rewind or chain and sprocket drive powered by an electric, hydraulic or compressed air motor. Gear-driven mechanism with pinion shaft brake can be specified as auxiliary crank rewind on power rewind reels, at extra cost.

Brakes & Locks:

Crank rewind reels will be supplied with a pinion brake and power rewind reels with a comet brake. Other brakes and locking devices may be specified. (See Ordering Guide & Accessory Catalog.)

Inlet:

Standard inlet is a 90° ball bearing swivel joint with 3" female NPT threads.

Outlet:

Standard outlet is a flanged riser with 3" female NPT threads.

Other sizes and/or threads can be furnished and must be specified.

Standard outlet riser and hub assembly are aluminum with iron inlet swivel joint. Optional bronze or aluminum swivel joint and stainless steel hub assembly and riser, are available at extra cost, to meet special product handling requirements.

Optional Rollers:

Rollers may be purchased as accessory items. Specify roller position when ordering. Mounting brackets are necessary. (See Ordering Guide & Accessory Catalog.)

Operating Pressures & Temperatures:

These reels operate at pressures to 300 psi (21 bar), and handle product temperatures from -20° F to +225° F (-29° C to +107° C).

Reels to operate at other pressures and temperatures can be furnished at extra cost.

Chain Clutch-Reduction Units:

These units are recommended for use on reels with 39" diameter or larger discs and/or when increased torque and slower rewind speeds are required. Factory-installed when specified or available as an accessory item for field installation. (See Ordering Guide & Accessory Catalog.)



Finish: Refer to page 4.



Shown with Optional Auxiliary Rewind

Series 9000

Standard Configuration Shown

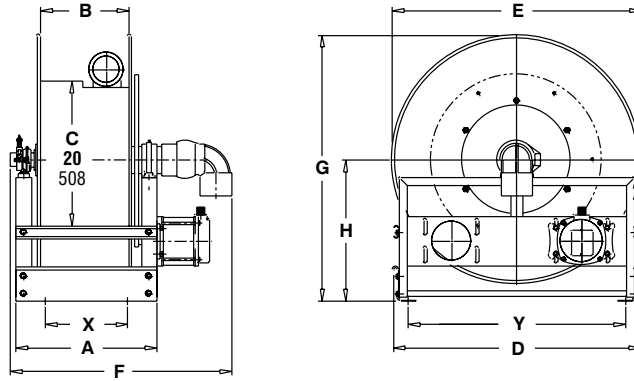
For:

- Suction/Discharge
- High Volume Application
- Bulk Transfer
- Chemical Transfer
- Fueling

Refer to:

Aviation Catalog H-9448-AV
Petroleum Catalog H-9447-FD

Dimensions and capacities



Series 9000

BE SURE TO CHECK DIMENSIONS AND WEIGHTS PRIOR TO ORDERING.
To receive a detailed parts breakdown drawing for Series 9000, request ISO 57.

Hose Capacity of Reel <u>feet</u> m.				Model Number	Reel Dimensions <u>inches</u> mm.												Approx. Weight Crank Rewind <u>lb.</u> kg.	
I.D. (in)	2"	2 1/2"	3"		x, y indicate mounting holes. See page 2.												NET	SHIP
I.D. (mm)	51	64	76	For Power Rewind See Note 3	A	B	D	E	F	F	F	F	G	H	X	Y		
O.D. (in)	2 9/16"	3 3/16"	3 3/4"		CRANK	ELEC.	AIR	HYD										
O.D. (mm)	65	81	95															
45	20	20		9326-33-34	17.75	11.5	31.75	31.75	27.75	27.75	27.75	27.75	33.88	18	10.25	27.75	101	171
14	6	6			451	292	806	807	705	705	705	705	861	457	260	705	46	78
70	30	25		9332-33-34	23.75	17.5	31.75	31.75	33.75	33.25	33.25	33.25	33.88	18	16.25	27.75	147	217
21	9	8			603	445	806	807	857	845	845	845	861	457	413	705	67	98
100	45	35		9338-33-34	30.25	24	31.75	31.75	40.25	39.75	39.75	39.75	33.88	18	22.75	27.75	187	257
30	14	11			768	610	806	807	1022	1010	1010	1010	861	457	578	705	85	117
140	60	50		9346-33-34	38.25	32	31.75	31.75	48.25	47.75	47.75	47.75	33.88	18	30.75	27.75	237	372
43	18	15			972	813	806	807	1226	1213	1213	1213	861	457	781	705	108	169
75	40	35		9326-39-40	17.75	11.5	40	39	27.75	27.25	27.25	27.25	40.38	20.88	10.25	37	165	420
23	12	11			451	292	1016	991	705	692	692	692	1026	530	260	940	75	191
120	60	55		9332-39-40	23.75	17.5	40	39	33.75	33.25	33.25	33.25	40.38	20.88	16.25	37	201	460
37	18	17			603	445	1016	991	857	845	845	845	1026	530	413	940	91	210
185	90	80		9338-39-40	30.25	24	40	39	40.25	39.75	39.75	39.75	40.38	20.88	22.75	37	239	480
56	27	24			768	610	1016	991	1022	1010	1010	1010	1026	530	578	940	108	218
200	130	115		9334-45-46	26.25	20	46	45	36.25	35.75	35.75	35.75	46.38	23.88	18.75	43	361	525
61	40	35			667	508	1168	1143	921	908	908	908	1178	607	476	1092	164	239

Specifications subject to change.

Notes:

- Upon request, reels can be supplied with drum lengths other than shown and with disc sizes in other diameters.
- Weights shown in chart are for crank rewind models. ADD these amounts for power rewind models:

	Net (lbs.)	Ship (lbs.)	Net (kg.)	Ship (kg.)
Electric	40	40	18.1	18.1
Hydraulic	20	20	9.1	9.1
Air	20	20	9.1	9.1

- When ordering power rewind models, prefix model number with:

A = Air Rewind EP = Electric Rewind (1/2 HP) HD = Hydraulic Rewind
(Air rewind reels are supplied with control valve and hose; 12v and 24v DC rewind reels are supplied with switch and solenoid; 115v AC rewind reels are not supplied with switch but can be ordered separately; hydraulic rewind reels are not supplied with control valve.)

STORAGE REELS

Manual or Power Rewind Storage Reels To handle single 1/4" through 1-1/2" O.D. hose.

Manual Rewind Only:

Series C3200 reels are designed for storage of long lengths of hose, cable, rope, wire or other materials. A 4-1/2" x 7" opening in the drum permits end of hose, etc., to be inserted to initiate winding.

Manual or Power Rewind:

Series C1500 reels are designed for storage of long lengths of hose, cable, rope, wire or other materials. A 1-1/8" x 2-3/8" (28.6 mm x 60.3 mm) opening in the drum permits end of hose, etc. to be inserted to initiate winding.

Rewind:

Series C3200 – Choose disc rewind or removable direct crank rewind.

Series C1500 – direct crank rewind, permanently attached to axle, is standard. A removable crank option is available. Also available with chain and sprocket rewind powered by electric, compressed air, or hydraulic motor.

Brakes & Locks:

Series C3200 – supplied with a spring actuated pin lock.

Series C1500 – supplied with cam lock brake and an adjustable spring tension brake on manual rewind models only. Other brakes or locking devices may be specified. (See Ordering Guide & Accessory Catalog.)

Options:

Divider discs can be placed at almost any point on the drum. Be sure to specify spacing of discs on your order. Larger drum diameters are available for materials with larger bend radii. With this option, the reel capacity is reduced.

Optional Rollers:

Rollers may be purchased as accessory items. Specify roller position when ordering. Mounting brackets are necessary. (See Ordering Guide & Accessory Catalog.)

Finish: Refer to page 4.

NOTE: THESE REELS HAVE NO LIVE FLUID CONNECTIONS. FOR STORAGE ONLY.

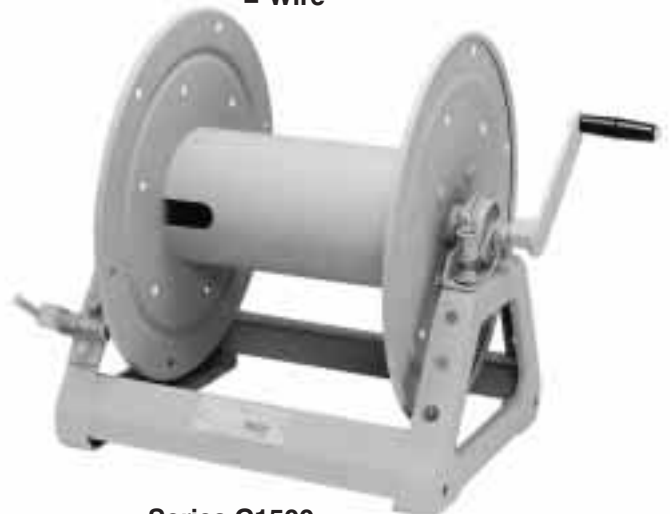


Shown with Optional Crank Handle

Series C3200
Standard Configuration Shown

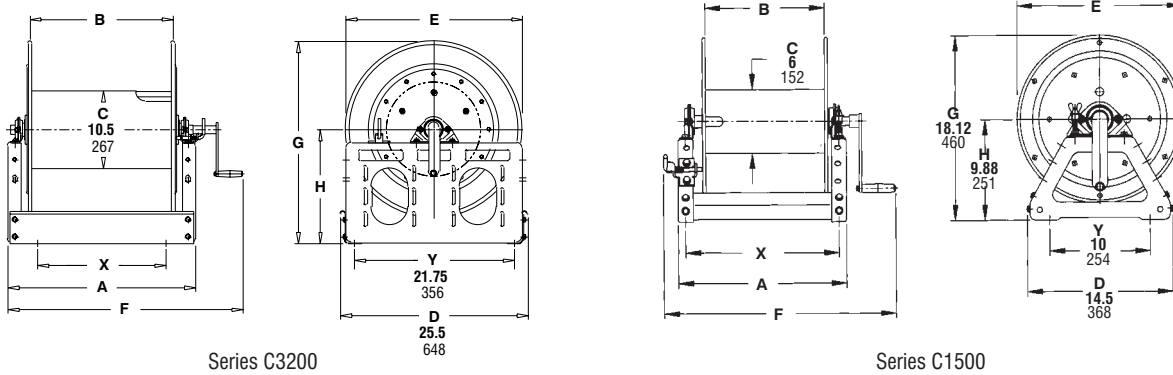
For Storage Of:

- Hose
- Cable
- Rope
- Wire



Series C1500
Standard Configuration Shown

Dimensions and capacities



BE SURE TO CHECK DIMENSIONS AND WEIGHTS PRIOR TO ORDERING.

To receive a detailed Storage Reels parts breakdown drawing for Series C3200, request ISO 117, for Series C1500, request ISO 179.

O.D. (in)	Capacity of Reel						Model Number	Reel Dimensions										Approx. Weight			
	$\frac{1}{4}$ "	$\frac{1}{2}$ "	$\frac{3}{4}$ "	1"	$1\frac{1}{4}$ "	$1\frac{1}{2}$ "		A	B	E	E	E	E	F	F	F	F	G	H	X	NET
O.D. (mm)	feet m.							inches mm.										lb. kg.			
6	13	19	25	32	38				CRANK	ELEC.	AIR	HYD	CRANK	ELEC.	AIR	HYD					
1000	450	225	125	90		C3218-25-26	15	9.5	24.75	-	-	-	22	-	-	-	27.88	15.5	7	85	127
305	137	69	38	27			381	241	629	-	-	-	559	-	-	-	708	394	178	39	58
1000	500	325	200			C3228-25-26	25.5	20	24.75	-	-	-	32.5	-	-	-	27.88	15.5	17.5	109	151
305	152	99	61				648	508	629	-	-	-	826	-	-	-	708	394	445	49	68
1300	650	400	275			C3234-25-26	31.5	26	24.75	-	-	-	38.5	-	-	-	27.88	15.5	23.5	122	164
396	198	122	84				800	660	629	-	-	-	978	-	-	-	708	394	597	55	74
975	625	400				C3246-25-26	43.5	38	24.75	-	-	-	50.5	-	-	-	27.88	15.5	35.5	149	199
297	191	122					1105	965	629	-	-	-	1283	-	-	-	708	394	902	68	90
900	525	375				C3228-30-31	25.5	20	28.75	-	-	-	32.5	-	-	-	29.88	15.5	17.5	120	170
274	160	114					648	508	730	-	-	-	826	-	-	-	759	394	445	54	77
1100	675	500				C3234-30-31	31.5	26	28.75	-	-	-	38.5	-	-	-	29.88	15.5	23.5	133	183
335	206	152					800	660	730	-	-	-	978	-	-	-	759	394	597	60	83
750	475	350				C3224-33-34	21	15.5	31.75	-	-	-	28	-	-	-	32.38	16.5	13	120	170
229	145	107					533	394	806	-	-	-	711	-	-	-	822	419	330	54	77
1200	925					C3246-33-34	43.5	38	31.75	-	-	-	50.5	-	-	-	32.38	16.5	35.5	170	248
366	282						1105	965	806	-	-	-	1283	-	-	-	822	419	902	77	112
1300	325	150	75	-	-	*C1514-17-18	11	6	16.5	19	19	19	16	15.75	15.25	15.75	18.12	9.88	9.5	23	30
396	99	46	23	-	-		279	152	419	483	483	483	406	400	387	400	460	251	241	10	14
650	300	150	-	-	-	*C1520-17-18	17	12	16.5	19	19	19	22	21.75	21.25	21.75	18.12	9.88	15.5	25	32
198	91	46	-	-	-		432	305	419	483	483	483	559	552	540	552	460	251	394	11	15
1000	450	225	-	-	-	*C1526-17-18	23	18	16.5	19	19	19	28	27.75	27.25	27.75	18.12	9.88	21.5	27	34
305	137	69	-	-	-		584	457	419	483	483	483	711	705	692	705	460	251	546	12	15
1200	550	275	-	-	-	*C1530-17-18	27	22	16.5	19	19	19	32	31.75	31.25	31.75	18.12	9.88	25.5	29	36
366	168	84	-	-	-		686	559	419	483	483	483	813	806	794	806	460	251	648	13	16

Specifications subject to change.

Notes:

- Upon request, reels can be supplied with drum lengths other than shown and with disc sizes in other dimensions.
- Dimensions reflect pressed frames.
- Weights shown in chart for C1500 series are for crank rewind models. ADD these amounts for power rewind models.

	Net (lbs.)	Ship (lbs.)	Net (kg.)	Ship (kg.)
Electric	18	18	8.2	8.2
Hydraulic	15	15	6.8	6.8
Air	15	15	6.8	6.8

- When ordering power rewind models (C1500 only)

Prefix model number with:

A = Air Rewind E = Electric Rewind HD = Hydraulic Rewind

(Air rewind reels are supplied with control valve and hose; 12v and 24v DC rewind reels are supplied with switch and solenoid; 115v AC rewind reels are not supplied with switch but can be ordered separately; hydraulic rewind reels are not supplied with control valve.)

- Series C3200 requires $3\frac{1}{2}$ " clearance to remove crank handle.

- Subtract 5" from 'F' dimension for disc rewind on C3200 Series.

*UPS shippable

Hannay will go to any length to provide you with the hose reel you need.

As the leading manufacturer of hose and cable reels, Hannay knows what you need in a reel. You need a reel that's long-lasting. Built to high standards. One that requires only minimal routine maintenance. A reel that helps you get the job done.

You need Hannay Reels.

All our reels are made to stringent specifications, so you know you're buying reels you can depend on year after year, even under the most demanding conditions. Plus, we make reels for every application and every industry. We have 2700 standard models and if one of these doesn't meet your needs, we'll work with you to design a reel that fits your specific application.

This catalog contains our most popular hose reels. For cable reels, or reels for specific applications, just ask and we'll send you the information you need. After all, when you deal with the reel leader, it's easier to have a reel choice.

To order Hannay Reels

Please refer to our Ordering Guide & Accessory Catalog. For more information on our 2700 standard models of hose and cable reels, please ask about specific product catalogs.

Other Hannay Catalogs available are: Audio Video, Aviation Refueling, Cable, Firefighting, LP Gas, Lube, Petroleum Delivery, Portable, Pressure Wash, Spray, Stainless, Triad Rescue, Welding and Ordering Guide & Accessory Catalog.



Hannay Reels, Inc.
553 State Route 143
Westerlo, NY USA 12193-0159
Telephone 518-797-3791
Toll Free 1-877-GO REELS (467-3357)
Fax 1-800-REELING (733-5464) USA
or
FAX 1-518-797-3259 (International)
www.hannay.com
reels@hannay.com